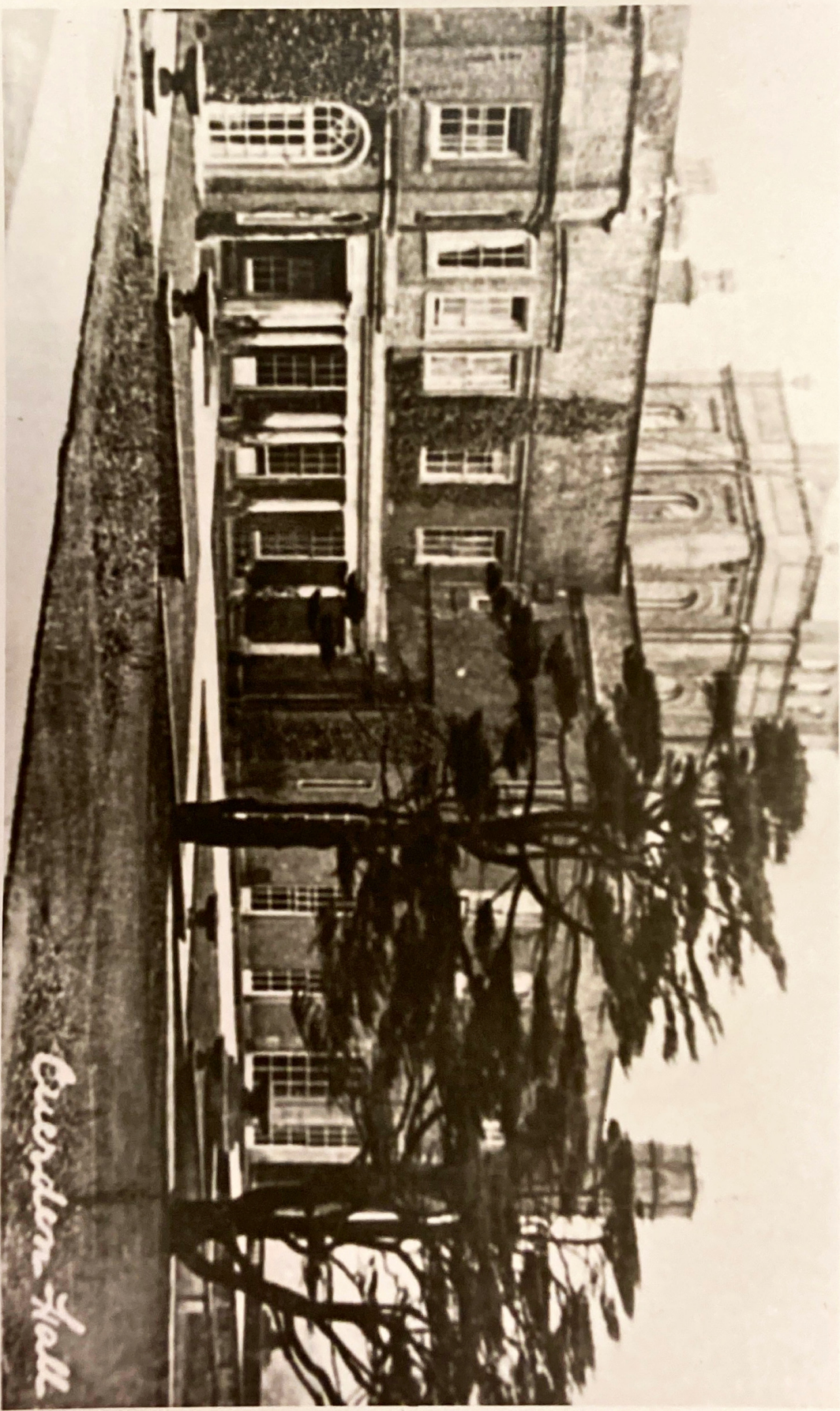


Lawn to the South-east where fund-raising events are held for the Sue Ryder Home in Guerden Hall. Access from Wigan Road and Shady Lane.



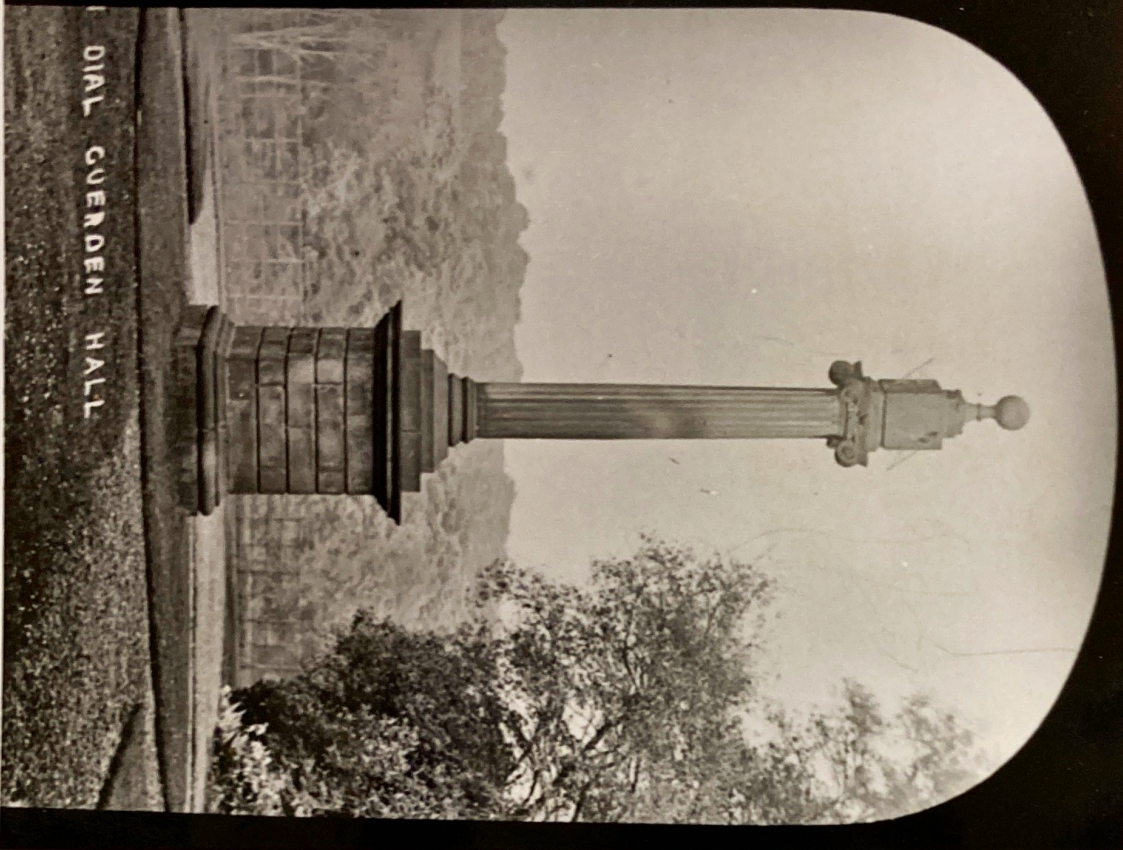


The West side Cwerden Hall Bamber Bridge

Cwerden Hall



The former Main Lodge - Cuerden Hall - Bamber Bridge



Now (1995) Surrounded by
tall trees



The main Lodge Arch (A49) was removed late 1950's. Foundations removed early 1990's. Cuerden Hall Photo April, 1908



Tunnel path to conceal staff as they went about their business -from owner, Cuerden Hall. It became a public footpath

IN THE GROUNDS GUEROEN HALL





STAG BROW BAMBER BRIDGE

PHOTO S. BERRY

Entrance to Cuerden Hall Bamber Bridge Remnants of Stag Lodge
remain despite widening of Lostock Lane