

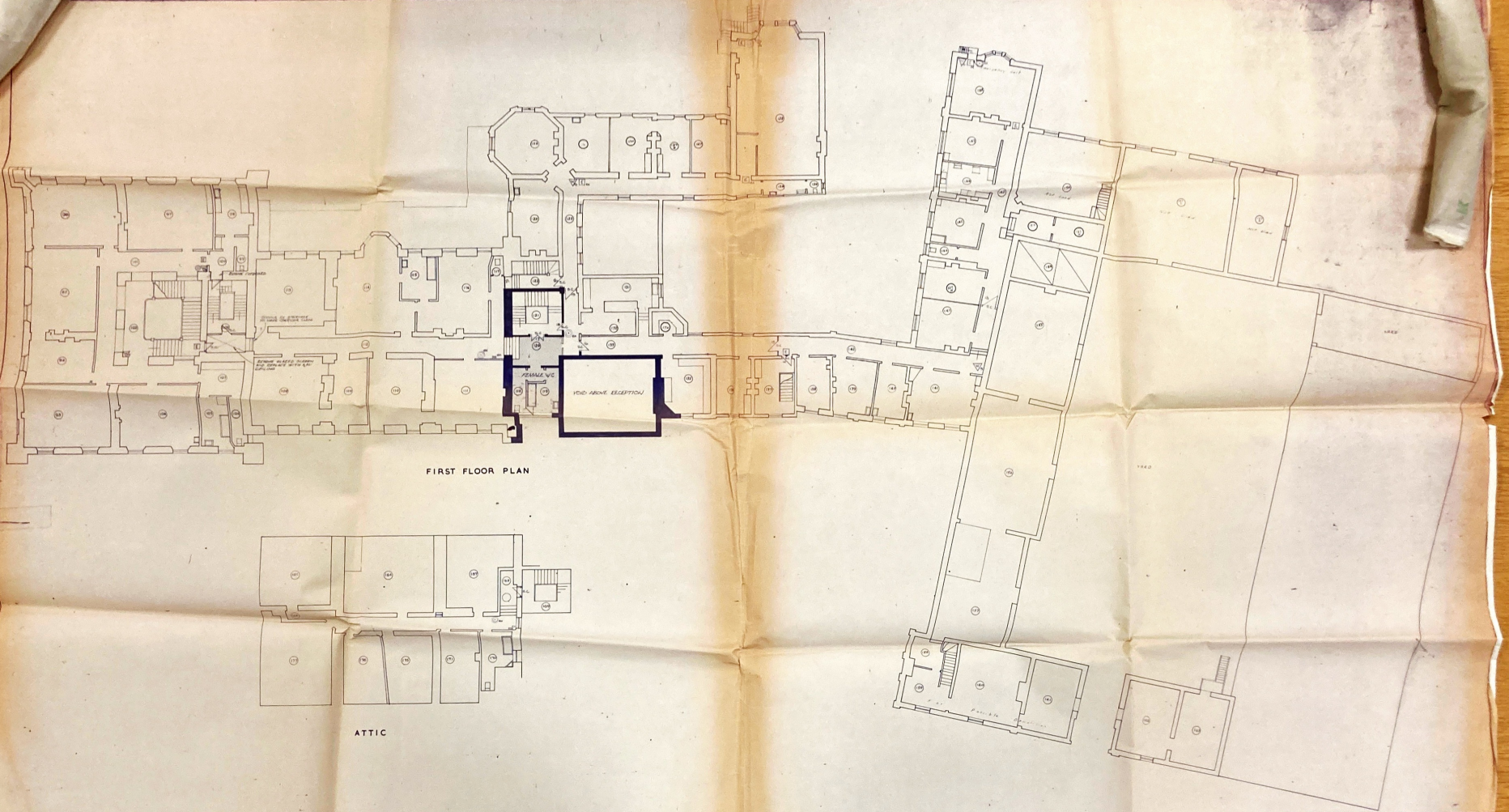
GROUND FLOOR PLAN

BASEMENT

- ① OFFICE
- ② RESTAURANT
- ③ KITCHEN
- ④ SERVICE ROOM
- ⑤ FREE BENEFIT ROOM
- ⑥ RECEPTION ROOM

SCALE TO 1"

Taken from Drawing No. 31/52 7.7.52.
Traced by J.S. Sinner. HQ North West District
Cuarden Hall Bamber Bridge. 24 Oct '68. Revised 7.2.61.



FIRST FLOOR PLAN

ATTIC

CUERDEN HALL. BAMBER BRIDGE. NR PRESTON.

SCALE: 8 FEET TO 1 INCH

Plans from Drawing No. 21228 81/710
 Revised 10/11/11 From No. 11228
 Revised 10/11/11 By J. C. Pugh, Cumbria
 Revised 10/11/11 By J. C. Pugh, Cumbria

Taken from Drawing No. 32/52. 21. 7. 52

Revised 7. 2. 61. Folio No. P 100.

Traced by H. Sumner. HQ N.W. District, Cuernavaca

Hall, Bamber Bridge. 28 Oct '68.

SCALE: 8 FEET
TO 1 INCH